



ABRAMS

world trade wiki



## What we can do for you:



### **Are you looking for suppliers and customers?**

ABRAMS world trade wiki provides you with companies worldwide that supply or buy your desired product.



### **Would you like to track the activities of your competitors?**

We offer you a quick overview of their international relations with suppliers and customers as well as detailed information on shipments and products.



### **Do you assume that your customers also do business with the competition?**

ABRAMS world trade wiki gives you the opportunity to find out at a glance.



### **Do you want to analyze your supply chain both upstream and downstream?**

With our platform, you can not only look up to eight tiers forward or backward, but also identify intermediaries with just one click.

## How it works:

ABRAMS world trade wiki is a business intelligence platform based on Customs Data and Statistical Data from UN Comtrade. Customs Data contains information from bills of lading, such as shipper, consignee, route, product description, weight or value.

Using our analysis tools, you will gain valuable insights for your business relevant to your company's goals.

*ABRAMS world trade wiki is your companion for the daily challenges of world trade and provides you not only with details on specific case analyses, but also with information for your long-term strategic decisions.*

# Free Search



Search bills of lading for customs tariff numbers (HS codes), products, company names, countries, etc.



Refine your search using filter and sorting functions



Use operators to narrow down your search



Get further insights into international trade relations through optional Port Data

What are you searching for?

**200410\* (frozen +potato\*) (patata\* +congelada\*)** 🔍

394,027 entries found

Search keyword(s) in multiple languages ▼



Shipment	Supplier	Country	Customer	Country	Product Description	HS Code	Marks
1 2022-03-04 (arrival)	Cavendish Farms 100 Midland Dr. E1A6X4 Dieppe NB	Canada	Royal Castle Ltd. Jm26 J4 Piarco International National Mail Center TT	Trinidad and Tobago	FROZEN FRENCH FRIED POTATOES P.O.R. SUMMARY REPORTING NUMBER VFD012599/SUM2082	2004108040	TTRU58
2 2022-03-04 (arrival)	Mccain Calatin Inc. C/O Mccain International 317-3 Main St. E7L1B2 Florenceville-Brist NB	Canada	Bahamas Food Services, Ltd. North Gladstone Road, Nassau, Bahamas Nassau NP Bahamas	Bahamas	FROZEN POTATO PRODUCT HS CODE: 200410 NET WEIGHT: 22806.59 KG GROSS WEIGHT: 24099.32 KG P.O.R. SUM2285	2004108040	SEGU97
3 2022-03-04 (arrival)	Lamb Weston Stationsweg 18A 4416 PJ Kruiningen NL	Netherlands	Armada Warehouse Solutions, LLC Alpha Dr. 15238 Pittsburgh US	United States of America	MCD WEDGES S.O. OTE GF 5X2.5KG EUR56PROD.CODE : W29ESRHS CODE: 20041099 FROZEN PREPARED POTATO PRODUCTCOUNTRY OF ORIGIN: NLTEMP SETTING: -21 C	20041099	ARMADA
4 2022-03-04 (arrival)	Mccain Calatin Inc. C/O Mccain International 317-3 Main St. E7L1B2 Florenceville-Brist NB	Canada	Delmarex S.R.L. Eduardo Vicisio 46 Delmarex	Dominican Republic	FROZEN POTATO PRODUCT HS CODE: 200410 NET WEIGHT: 20060.56 KG GROSS WEIGHT: 21089.31 KG P.O.R. SUM2285	2004108020	TTRU58
5 2022-03-04	Mccain Calatin Inc. C/O Mccain International 317-3 Main St. E7L1B2 Florenceville-Brist NB	Canada	Aetos Holdings Ltd. PO Box N4351 Nassau BS	Bahamas	FROZEN POTATO PRODUCT, DESSERTS HS CODES: 200410, 1905.90 NET WEIGHT: 18573.50 KG GROSS WEIGHT: 19710.65 KG P.O.R. SUM2285	2004108020, 190590	SEGU93

# Market Intelligence



World market overview for each HS code (product) based on Statistical Data from UN Comtrade



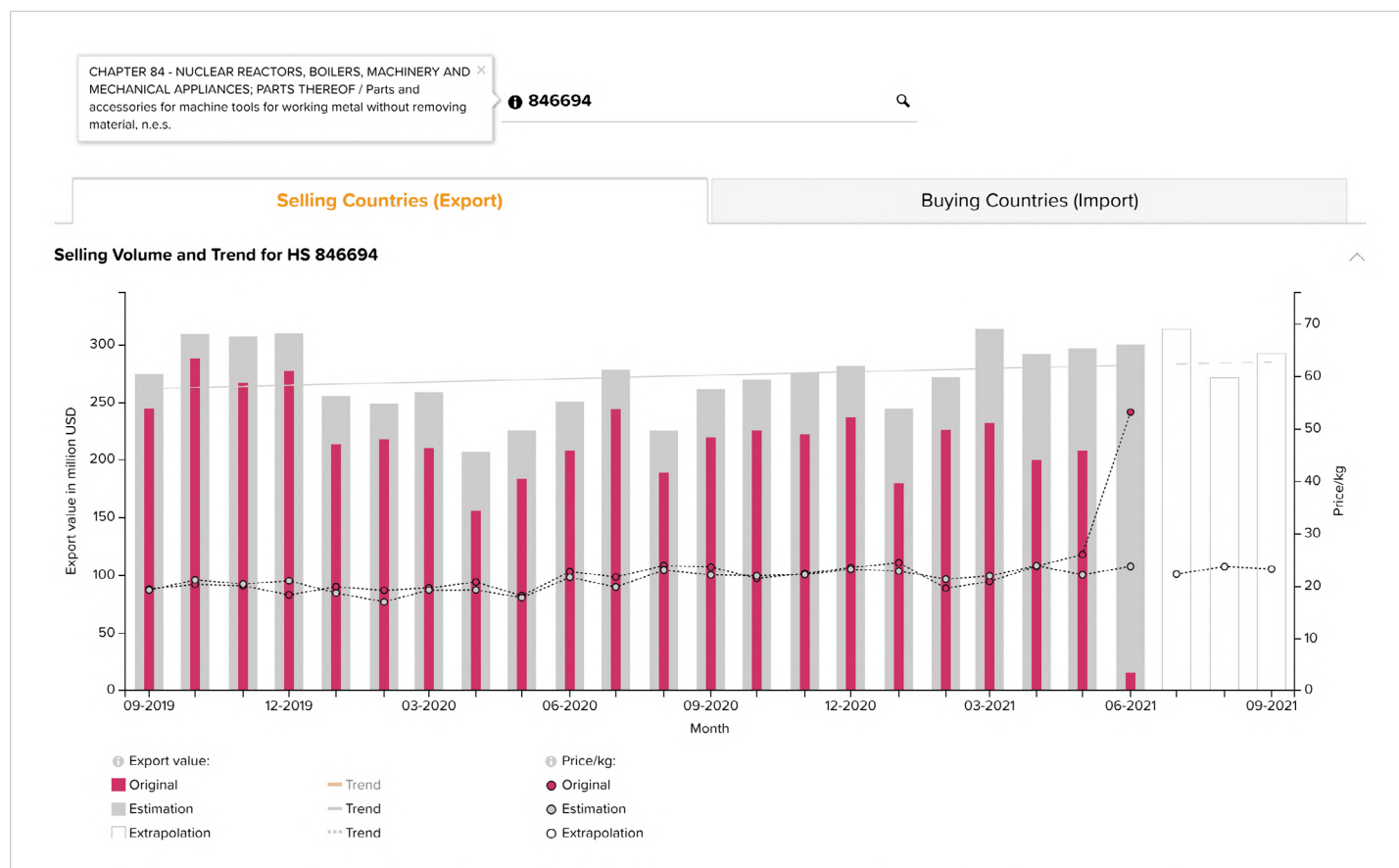
Analyses of emerging and declining markets



Insight into global product trends to allow you to react promptly



Combination with Customs Data to identify importing and exporting companies





# Selling Intelligence



Identification of potential customers for your products



Qualification and analysis of potential customers



Analysis of sourcing countries and the position of your product in their procurement



Combination of the tools to identify new large accounts and their purchase prices

26,230 Customers for:
CHAPTER 42 - ARTICLES OF LEATHER; SADDLERY AND HARNESS; TRAVEL GOODS; HANDBAGS AND SIMILAR CONTAINERS; ARTICLES OF ANIMAL GUT (OTHER THAN SILKWORM GUT) / Trunks, suitcases, vanity cases, executive-
420211

Customers by Country		Which countries do they purchase from? (5)		Activity	
Mexico	291 Customers ×	Italy	134 Customers ×	Active since 2007-01-01	2,939 Customers
United States of America	82 Customers ×	Spain	112 Customers ×		
		Germany	67 Customers ×		
		France	54 Customers ×		
		United Kingdom	52 Customers ×		

Customer Name	Shipments and origin	Expertise (months)	Last Activity	Suppliers for HS-Code 420211	Total Suppliers	Number of all HS-Codes	Share of observation in all shipments	Observations in Shipments	Observations of all HS-Codes
1 <b>Louis Vuitton Mexico S. de R.L. de C.V.</b> Pdte Mazarik/407/7/Polanco/M Hidalgo/Lafontaine Y C De LA Barca 11560 Tlahuac Distrito Federal MX	900	78	Jul 15, 2021	2	105	600	1.15%	919	96,537
2 <b>Massimo Dutti Mexicosa De CV</b> Poniente 146 730 Industrial Vallejo Entre Norte 49 Y Norte 45 2300 Azcapotzalco Distrito Federal MX	552	61	Feb 6, 2020	6	28	535	0.28%	601	216,961
3 <b>Ferragamo Mexico S. de R.L. de C.V.</b> Emilio Castelar/240/201/Polanco Chapultepec/ /Pdte Masarik Y Dickens/ 11560 Tlahuac Distrito Federal MX	300	78	Jul 7, 2021	5	64	437	1.24%	340	27,449
4 <b>Sociedad Textil Loniassa De CV</b> Paseo De LA Reforma 509 Piso 9 Cyd Cuauhtemoc Rio Elba Y Rodan 6500	254	75	Apr 26, 2021	2	3	499	0.35%	256	73,797

# Company Transparency



Overview of a company's product portfolio  
in procurement and sales



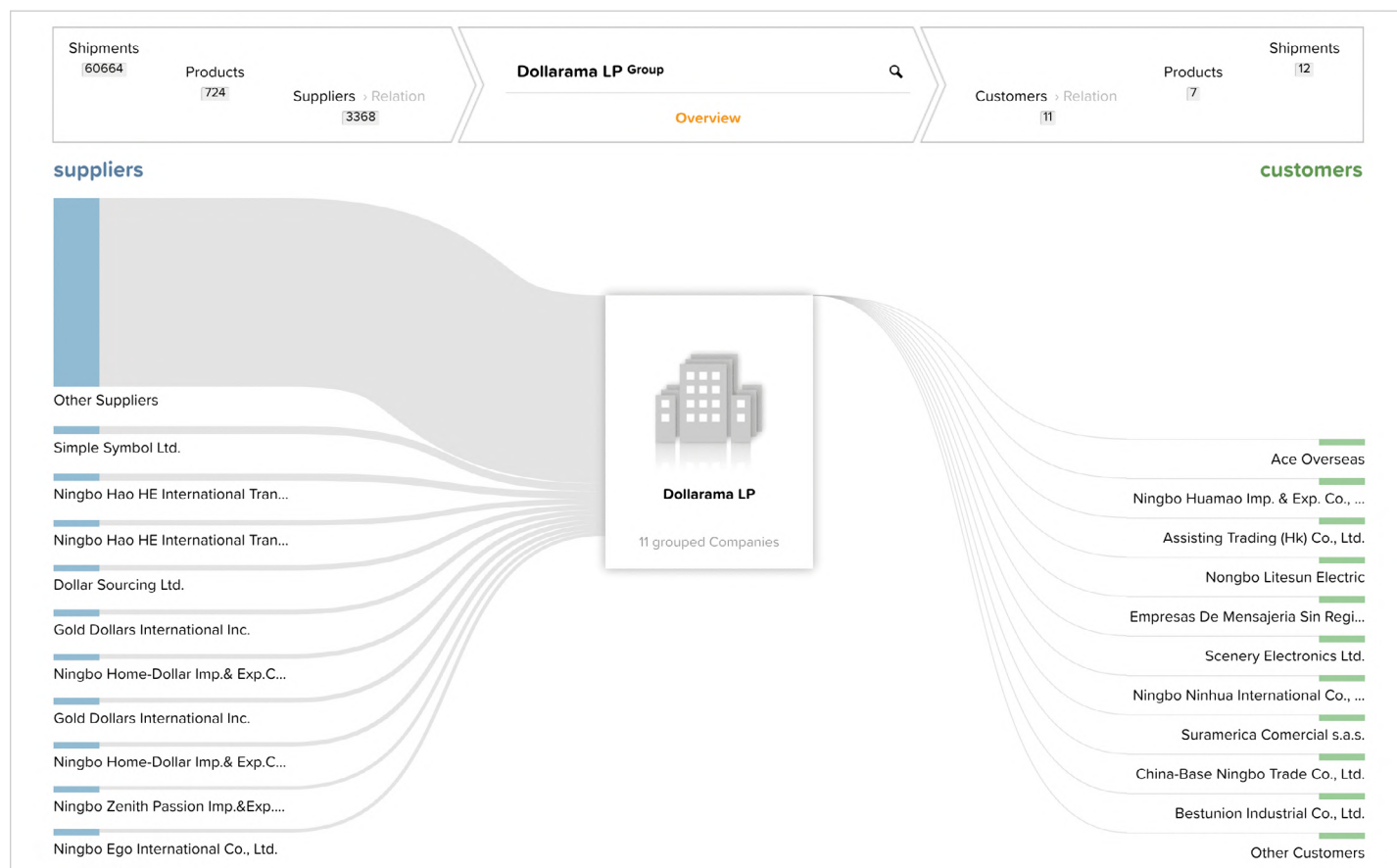
Identification of suppliers and customers and  
their ranking within a company



Analysis of trends in terms of prices, sales  
volume, supply chain network, and much more

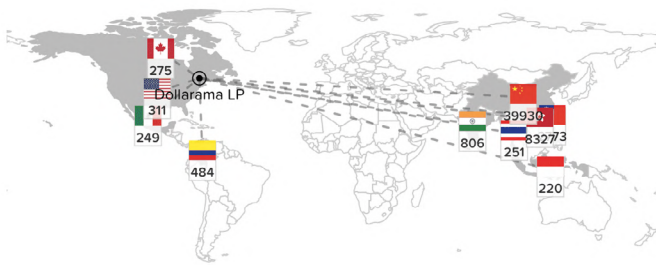


Insights into business relationships between  
companies





## Top Supplier Countries



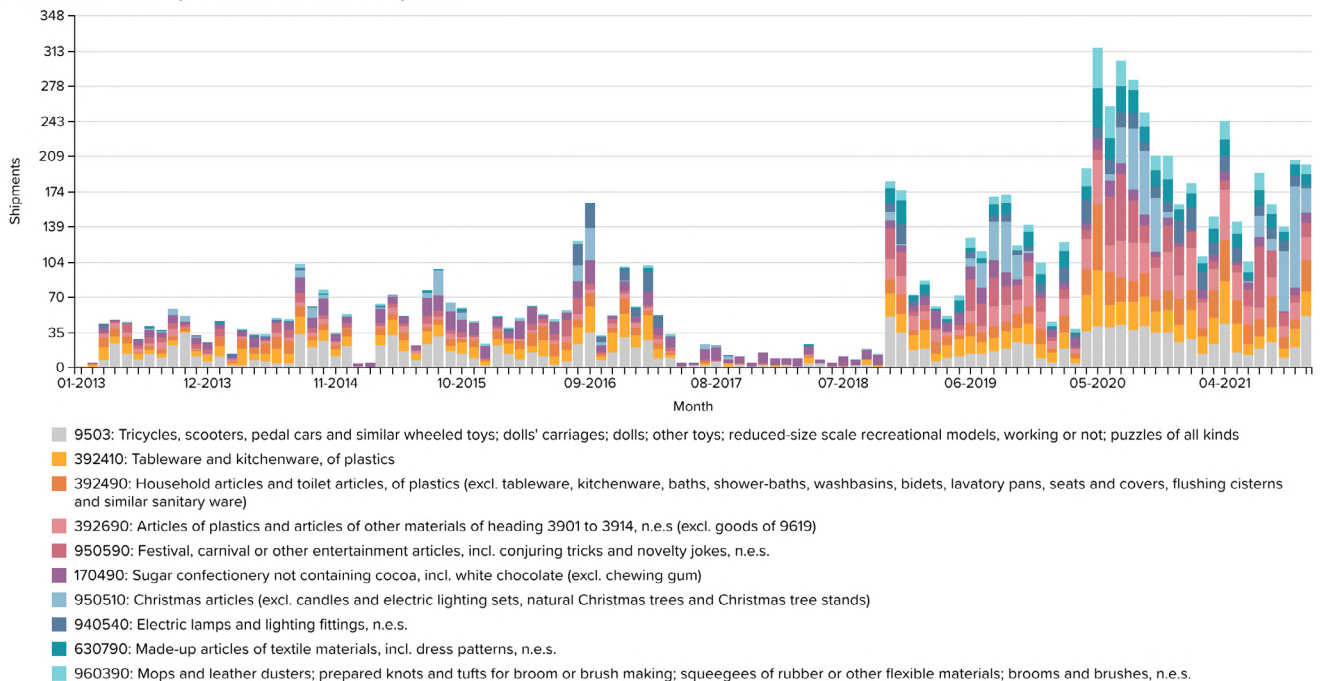
## Supplier Countries

Click country name to reveal top suppliers from each country.  
Click number of shipments to show shipments from selected country.

	Country	Suppliers Count	Shipments	Share
1	<a href="#">China</a>	2032	39,930	65.8%
2	<a href="#">Hong Kong</a>	268	8,327	13.7%
3	<a href="#">Taiwan</a>	35	2,773	4.6%
4	<a href="#">India</a>	88	806	1.3%
5	<a href="#">Colombia</a>	14	484	0.8%
6	<a href="#">United States of America</a>	25	311	0.5%
7	<a href="#">Canada</a>	17	275	0.5%
8	<a href="#">Thailand</a>	45	251	0.4%
9	<a href="#">Mexico</a>	13	249	0.4%
10	<a href="#">Indonesia</a>	23	220	0.4%
41	Countries	3415	60,664	100%

Number of rows: **10** v

## Trend Timeline with Top HS Codes in Received Shipments



# Supply Chain Intelligence



Up- and downstream up to eight tiers



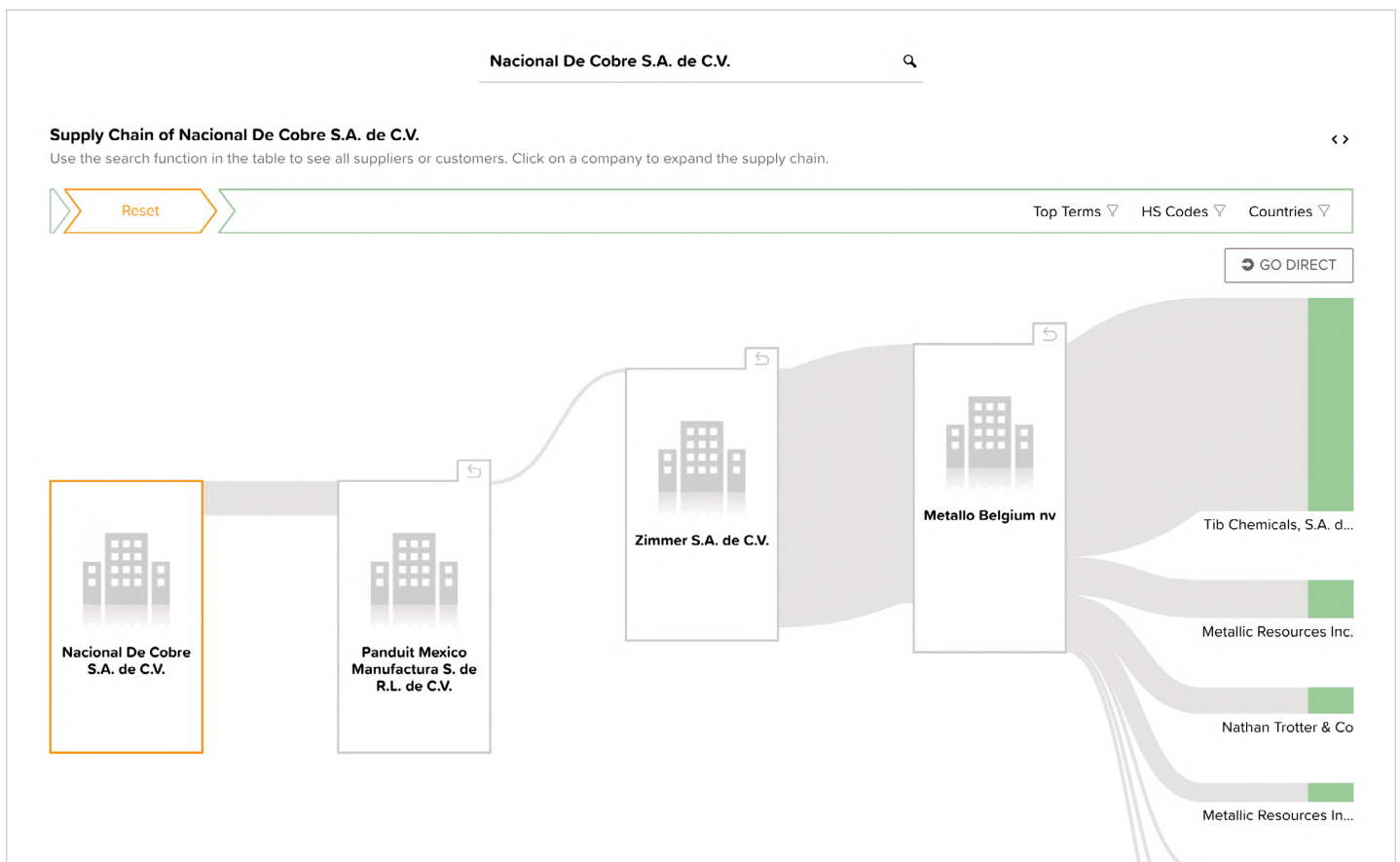
Identification of global suppliers to purchase against lower prices



Information about potential middlemen in your customer base with the GoDirect function



All-in-one: Lower purchasing prices, higher margins and perfect supply-chain management



# Competitive Intelligence



Identification of competitors in procurement and sales



Learn how your supplier or customer ranks you in terms of order volume



Analysis of the competitive situation regarding order frequency and quantity



Insight into a product portfolio within a relationship with identification of **competition** or **exclusivity**

846694

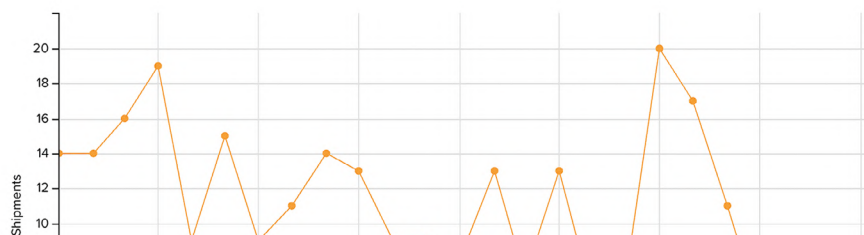
## Suppliers and Competitors of Nacional de Cobre S.A. de C.V. with HS-Code 846694

Supplier	Customer (Competitor)	Customer share in 846694	No. of shipments with 846694	All HS-Codes in this Relation	Customer share in this relation	No. of shipments in this relation
<b>Condux Inc.</b> 2590 114th St #200, Grand Prairie, TX 75050, USA						
✓	Arneses Electricos Automotrices S.A. de C.V. Carr Panameri/Km 230 5//Balvanera/Col Fracc Ind ...	54.9%	268	853890 (5532), 392690 (4320), 741999 (4764), 854720 (4820), 853690 (3066), 401693 (1216),...	63.5%	18,333
✓	Nacional De Conductores Electricos S.A. de C.V. Poniente 140/720//Industrial Vallejo/Azcapotzalco D...	19.5%	95	847990 (145), 846694 (95), 820720 (62), 690919 (121), 847790 (50), 392690 (52), 850440 (47),...	5.1%	1,468
✓	Cordaflex S.A. de C.V. Carretera Panamericana/Km230.6//Fracc Ind Balvan...	14.1%	69	690919 (72), 846694 (69), 820720 (33), 847990 (60), 401693 (31), 731815 (10), 847790 (27), 7318...	2.0%	573
✓	Arneses Electronicos Arnelec S.A. de C.V. Garcia Diego/125//Arboleda De Tequisquiapan//Ped...	4.3%	21	853690 (68), 392690 (59), 853890 (54), 680530 (37), 854720 (44), 401699 (35), 741999 (37),...	1.6%	476
✓	Condux S.A. de C.V. Poniente 140 720 02300 Azcapotzalco Distrito Fed...	3.5%	17	900110 (169), 390120 (246), 732690 (175), 853690 (168), 392390 (166), 390110 (168),...	9.9%	2,848
✓	Arcomex S.A. de C.V. Carretera Federal Pue Tlax/Km 31//Tlaxcala/Sin Ref...	3.1%	15	741999 (1090), 854720 (798), 853890 (713), 392690 (644), 853690 (317), 854442 (225),...	12.6%	3,633
✓	Conticon S.A. de C.V. Carretera Celaya Salamanca/Km 8.5//Villagran/Car...	0.6%	3	340399 (19), 732690 (19), 845590 (18), 401693 (7), 845490 (14), 560312 (13), 903290 (12), 59119...	0.5%	151

7 Customers (Competitors)

### Shipments sent Timeline to Customers with 846694

- ✓ Arneses Electricos Automotrices S.A. de C.V.  
Carr Panameri/Km 230 5//Balvanera/Col Fracc Ind Bal...
- ✓ Nacional De Conductores Electricos S.A. de C.V.  
Poniente 140/720//Industrial Vallejo/Azcapotzalco Df/N...
- ✓ Cordaflex S.A. de C.V.  
Carretera Panamericana/Km230.6//Fracc Ind Balvanera...
- ✓ Arneses Electronicos Arnelec S.A. de C.V.  
Garcia Diego/125//Arboleda De Tequisquiapan//Pedro ...
- ✓ Condux S.A. de C.V.  
Poniente 140 720 02300 Azcapotzalco Distrito Federal...



# Logistics Insights



Knowledge of a company's imports and exports with exact quantities and worldwide transport routes



Identification of new key accounts with high transport volumes



Insights into the activities of your logistics competitors



Aggregation of 3PL demand into more efficient routes, because you have more information than 4PL contractors

Please first select the role of the companies you are looking for:

☒ Supplier ☐ Customer

Country of Export ▼ Country of Import ▼ Transport Mode ▼ Agreed Incoterm ▼

Mexico x Spain x Sea x

**-01 LIVE ANIMALS** x HS-Codes

Separate by comma or spaces. To exclude an HS code, prepend it with "-" (minus).

**START SEARCH**

**1,279 Suppliers matching the above selected filter criteria**

Sort by shipment(s) or weight and select relevant companies.

	Supplier	No. of Shipments	Total weight of all shipments	Shipments and Weights per Origin Database			
▼	1 <b>Mexifrutas S.A. de C.V.</b> Carretera Internacional Guadalajara-Tepic KM 214+0.86 63511 San Cayetano MX	66	3,900 t	Mexico	EXPORT	66	3,999 t
▽	2 <b>Johnson Controls BE Operations Mexico S. de R.L. de C.V.</b> David Alfaro Siqueiros 104 MX	98	3,042 t	Mexico	EXPORT	98	3,334 t
▽	3 <b>Promarex S.A. de C.V.</b> Pto Progreso/11//Parq Ind Bonfil/Mazatlan Sin/Pto Veracruz Y Pto Tampico Mazatlan Sinaloa MX	117	2,424 t	Mexico	EXPORT	117	2,764 t
▽	4 <b>Viver Granos Y Semillas, S.A. de C.V.</b> Ruperto Paliza 103 80220 Culiacan Sinaloa MX	37	2,149 t	Mexico	EXPORT	37	2,243 t
▽	5 <b>Mexifrutas S.A. de C.V.</b> Carretera Internacional Guadalajara Tepic//Km 214 Ma////Adelante	22	1,895 t	Mexico	EXPORT	22	1,970 t

## How we make your life easier



### **Saving function**

Save your searches for companies or products and recall them with just one click later on.



### **Monitoring and Alerts**

Activate notifications to stay informed as soon as new information about your customers, suppliers, competitors and products becomes available.



### **Profiler**

The profiler enables you to work with the tools from the perspective of different companies, e.g. subsidiaries with different key products.



### **Export**

Export the results of your research in ABRAMS world trade wiki as an Excel spreadsheet for further processing offline.

# TOOLS

## Free Search

Unlimited search: e.g. for companies and products in international bills of lading.

## Company Transparency

Monitoring of business activities: e.g. which company sells which product, how often, to which customers?

## Market Intelligence

World market analysis: e.g. which countries are particularly attractive, where are potential customers or suppliers for your product?

## Supply Chain Intelligence

Multi-tier supply chain transparency and identification of middlemen: e.g. which suppliers does my supplier have; can I achieve lower purchase prices?

## Sourcing Intelligence

Identification of suppliers/sourcing markets: e.g. who are the most interesting active suppliers on the world market?

## Competitive Intelligence

Competitor analysis: e.g. which shares do competitors have with a common customer?

## Selling Intelligence

Identification of customers/markets: e.g. which companies are particularly interesting based on their procurement strategy?

## Logistics Insights

Analysis of global trade lanes: e.g. which customers have high transport volumes?

## Plans and prices

	Small Business	<b>BESTSELLER</b> Enterprise	Premium
	Get a first impression of the power of trade data.	Stay one step ahead of the competition.	The complete solution for your international business.
Free Search	✓	✓ (Port Data available)	✓ (Port Data included)
Market Intelligence	✓	✓	✓
Sourcing Intelligence	✓	✓	✓
Selling Intelligence	✓	✓	✓
Company Transparency	✓	✓	✓
Supply Chain Intelligence	✗	✓	✓
Competitive Intelligence	✗	✓	✓
Logistics Insights	✗	✗	✓

## About us

**ABRAMS Engineering Services  
GmbH & Co. KG**

**(HRA 6865)**

Registered office: Osnabrück, DE

After rebranding in 2020:  
ABRAMS Industries GmbH & Co. KG

**inigma LLC**

**(File Nr. USA 5884506)**

Registered office: New York, USA

**inigma LLC  
Branch Office**

**(HRB 148411)**

Registered office: Hamburg, DE

Offices: Hamburg, Osnabrück

**FOUNDATION**

**2002**

**FOUNDATION**

**2015**

**FOUNDATION**

**2017**

**MARKET LAUNCH**

[abrams-industries.com](https://abrams-industries.com)

**MARKET LAUNCH**

[abrams.wiki](https://abrams.wiki)

beta version under the brand name  
**ABRAMS world trade wiki**

**Tools:**

Free Search  
Market Intelligence  
Sourcing Intelligence  
Selling Intelligence  
Company Transparency

**RELEASE**

**Version 1.0**

**LAUNCH**

New Tool:  
**Competitive Intelligence**



ABRAMS world trade wiki

wins  
**CiMi.CON-Award**  
(most desired European  
award for business  
intelligence solutions)

More than 50 specialists  
from the areas of **Business  
Development, Consulting,  
Marketing, Design and IT**  
are constantly working on  
further developments of our  
knowledge portal  
**ABRAMS world trade wiki**

AWARD

PERSPECTIVE

2019

2020

2021

2022

RELEASE

Version 2.0

LAUNCH

New Tools:  
**Logistics Insights  
Supply Chain Intelligence**  
incl. GoDirect

RELEASE

Version 3.0

LAUNCH

of Port Data

## We will support you!

---

Your personal after-sales manager will be at your side throughout the entire subscription term. Whether it's training, consulting sessions or support via e-mail and chat, we are available to assist you with any questions you might have regarding ABRAMS world trade wiki.

Benefit from our many years of experience with trade data and gain deep insights into your customers, suppliers and competitors with ABRAMS world trade wiki, giving you a previously unimagined competitive advantage.



[www.abrams.wiki](http://www.abrams.wiki)



[info@abrams.wiki](mailto:info@abrams.wiki)



+49 (0) 40 – 257 66 45 – 200



[LinkedIn/ABRAMS.wiki](https://www.linkedin.com/company/ABRAMS.wiki)

# SCAN



[www.abrams.wiki](http://www.abrams.wiki)

ABRAMS world trade wiki is a division of inigma LLC

Germany: inigma LLC · Willy-Brandt-Straße 23-25 · 20457 Hamburg · Amtsgericht Hamburg, HRB 148411 ·

Managing Director: Dipl.-Wi.-Ing. Dr. Jürgen Abrams

U.S.A.: inigma LLC at Michelman & Robinson, LLP · 800 Third Ave. · 24th Fl. · New York, NY 10022 · File Number U.S.A.: 5884506

© 09/2022 inigma LLC. All rights are reserved.